

2024 CHARLES E. SHANNON COMMUNITY SAFETY INITIATIVE

NEW BEDFORD

Funded Partners: Bristol County District Attorney's Office, New Bedford Police Department, NorthStar Learning Center

Funded by the Office of Grants and Research, a state agency that is part of the Executive Office of Public Safety and Security, the Charles E. Shannon Community Safety Initiative (Shannon) is modeled after the Office of Juvenile Justice and Delinquency Prevention's Comprehensive Gang Model. Shannon is a multi-sector approach used to address a community's gang and youth violence problem. Each community receiving Shannon funding demonstrates the presence of risk factors for youth and gang violence. Shannon participants must be between the ages of 10-24 years.

Strategies, Outcomes, and Funding Allocation

Total Funding: \$1,138,983.45

Strategies	Outcomes		Funding Allocation
Case Management, Street Outreach, or Intervention	<u>307</u> youth received case management services	<u>241</u> case management goals achieved	\$363,113.38
Community Mobilization	<u>17,362</u> community members attended events, meetings, & presentations	<u>334</u> community events, meetings, & presentations held	\$181,556.69
Education & Employment	<u>29</u> youth participated in employment programs	<u>62</u> youth participated in education programs	\$181,556.69
Positive Youth Development & Recreation	<u>109</u> youth who developed leadership skills	<u>137</u> youth participated in youth development programs	\$181,556.69
Suppression	<u>95</u> hot spot patrols completed	<u>67</u> gang members/high-impact players arrested	\$231,200.00

Youth Risk Assessments

42%
LOW-RISK* Youth in danger of engaging in risky behavior or gang activity.

29%
MODERATE-RISK* Youth exposed to the same risk factors as low-risk youth, as well as additional risk factors such as truancy.

29%
HIGH-RISK* Youth who are perpetrators or victims of shooting or stabbing violence, and/or are known gang members.

* % of youth assessed for risk

Success Highlight

"We have a participant in the program who is currently enrolled in an alternative school. He initially struggled with his behavior and getting his school work done, but since his participation in the Shannon Program, he is now getting all A's and B's and is also completing his goal of transferring to New Bedford High School."

~NorthStar Learning Center

Community Risk Factors

Massachusetts

New Bedford

Total Population (2023/2024 Estimates)	7,136,171	100,695
Population Lives in Poverty (2024)	10.4%	19.9%
Unemployment Rate (2024)	3.4%	5.7%
Total School Population (2023-2024)	966,726	15,585
Low-Income (2024-2025)	42.1%	78.9%
High School Dropout Rate (2022-2023)	2.1%	4.2%

Sources: www.census.gov/quickfacts; profiles.doe.mass.edu; <https://lmi.dua.eol.mass.gov/LMI/LaborForceAndUnemployment#>

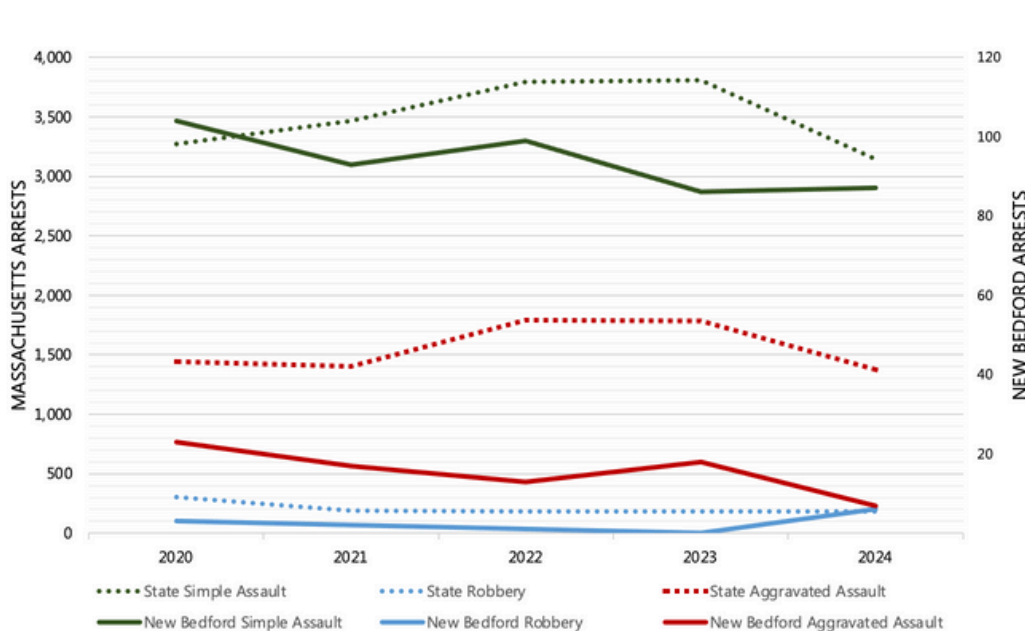
Gang Activity in New Bedford

21
Street Gangs

67
Gang Members
between the Ages
of 10-24

New Bedford gangs are increasingly recruiting young members ages 10-14. Youth are recruited to carry weapons and drugs and have been instrumental in several shootings in our community. There is concern that these youth are using substances that continue to interfere with their decision-making skills. In terms of types of violence committed by gangs in New Bedford, gang retaliation has slowed, but car thefts have picked up. Active gangs in the area seem to be focused most on making money and continuing to recruit younger youth.

5-Year Crime Trends for Offenses Committed by Youth Ages 10-24, 2020-2024



Changes in Crime for Young People Ages 10-24, 2020-2024

Simple assaults from 2020-2024 in...

- Massachusetts decreased 4%
- New Bedford decreased 16%

Robberies from 2020-2024 in...

- Massachusetts decreased 40%
- New Bedford increased 100%

Aggravated assaults from 2020-2024 in...

- Massachusetts decreased 4%
- New Bedford decreased 70%

Source: National Incident Based Reporting System (NIBRS)

Information contained in this report is from funding applications, reports supplied by the site, MA Department of Elementary and Secondary Education, US Census, MA Executive Office of Labor and Workforce Development, and Office of Grants and Research / Research Policy and Analysis Division. Special thanks to the Statewide Research Partner, Northeastern University, and the Crime and Justice Policy Lab of the University of Pennsylvania, for preparing this brief.